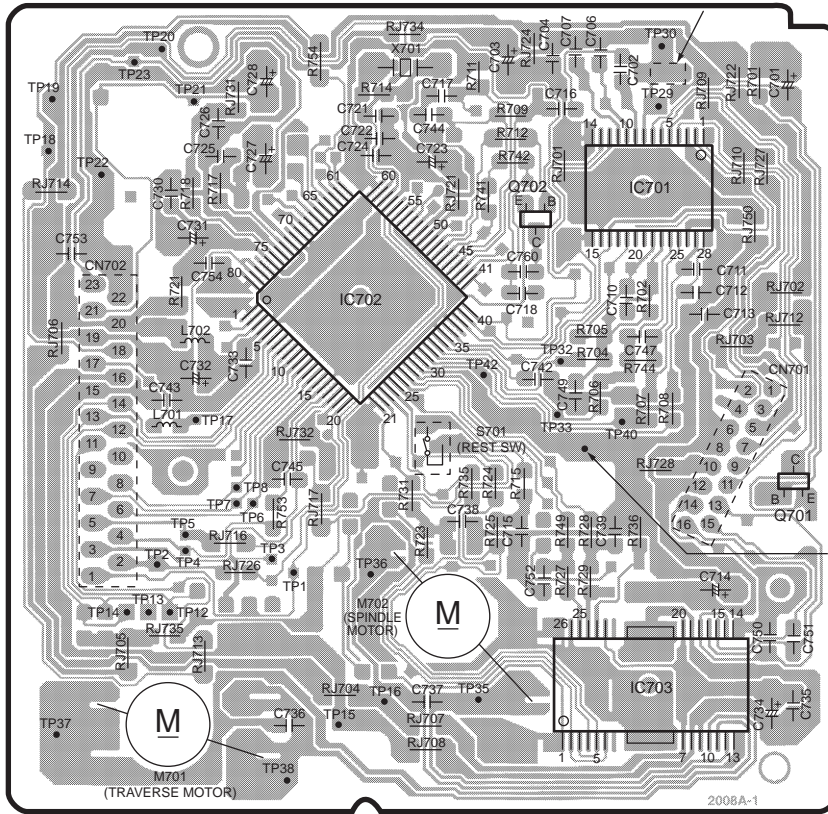
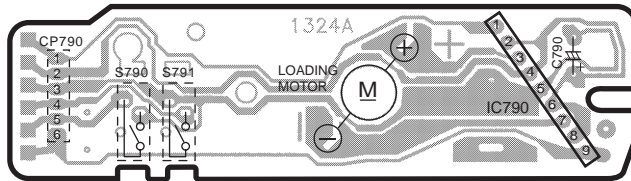


A CD SERVO P.C.B.



(REP2772A-N)

B LOADING MOTOR P.C.B.



(REP1960A)

ELECTRICAL PARTS LOCATION

Ref. No.	Lo. No.	Ref. No.	Lo. No.
A CD SERVO P.C.B.			
IC701	2D	R754	1B
IC702	3B	RJ701	2C
IC703	4D	RJ702	3D
Q701	3D	RJ703	3D
Q702	2C	RJ704	4B
L701	3A	RJ705	4A
L702	3B	RJ706	3A
X701	1C	RJ707	4C
S701	3C	RJ708	5C
CN701	3D	RJ709	2D
CN702	3A	RJ710	2D
M701	4A	RJ712	3D
M702	4C	RJ713	4B
TP1	4B	RJ714	2A
TP2	4A	RJ716	4B
TP3	4B	RJ717	3B
TP4	4B	RJ721	2C
TP5	4B	RJ722	2D
TP6	3B	RJ724	1C
TP7	3B	RJ726	4B
TP8	3B	RJ727	2D
TP12	4A	RJ728	3D
TP13	4A	RJ731	2B
TP14	4A	RJ732	3B
TP15	4B	RJ734	1C
TP16	4B	RJ735	4A
TP17	3B	RJ750	2D
TP18	2A	C701	2D
TP19	2A	C702	2D
TP20	1A	C703	1C
TP21	2B	C704	1C
TP22	2A	C706	1C
TP23	1A	C707	1C
TP29	2D	C710	3D
TP30	1D	C711	2D
TP32	3C	C712	3D
TP33	3C	C713	3D
TP35	4C	C714	4D
TP36	4B	C715	4C
TP37	5A	C716	2C
TP38	5B	C717	2C
TP40	3D	C718	3C
TP42	3C	C721	2B
R701	2D	C722	2B
R702	3D	C723	2C
R704	3C	C724	2B
R705	3C	C725	2B
R706	3C	C726	2B
R707	3D	C727	2B
R708	3D	C728	2B
R709	2C	C730	2A
R711	2C	C731	2B
R712	2C	C732	3B
R714	2B	C733	3B
R715	3C	C734	4D
R717	2B	C735	4D
R718	2B	C736	4B
R721	3B	C737	4C
R723	4C	C738	4C
R724	3C	C739	4C
R725	4C	C742	3C
R727	4C	C743	3A
R728	4C	C744	2C
R729	4C	C745	3B
R731	3C	C747	3D
R735	3C	C749	3C
R736	4D	C750	4D
R741	2C	C751	4D
R742	2C	C752	4C
R744	3D	C753	2A
R749	4C	C754	2B
R753	3B	C760	2C
B LOADING MOTOR P.C.B.			
IC790	7D	CP790	7B
S790	7B	C790	7D
S791	7B		

